



Brightly TheWorxHub

Brightly TheWorxHub™ for Healthcare

The easiest cloud-based environment of care rounding solution in healthcare

Today, compliance is top of mind, and being compliance-ready is a daily expectation of healthcare professionals. Yet with all the minute tasks, overwhelming number of codes and intricate requirements, we know that achieving compliance — combined with funding, tracking, and staffing barriers — is one of the most challenging aspects of a facilities director's job.

Designed for healthcare, TheWorxHub is the most user-friendly, cloud-based CMMS solution today. Powerfully combining asset management, compliance readiness, and safety rounding all into one easy-to-use solution, TheWorxHub enables those on the frontline to stay organized, streamline operations and communication, and reduce costs.



Stay organized

Easily centralize and access current and historical information with critical asset management and compliance-tracking tasks, ensuring teams stay organized.



Streamline operations and communications

Easily update service requests and automate work orders at any time regardless of location, enabling teams to streamline their day-to-day operations and communications.



Reduce costs

Easily view real-time data and analysis on risky and high-value assets, empowering your teams to save money and shift away from reactionary repairs to preventive maintenance.



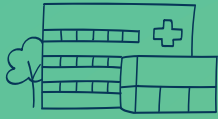
“

As we've started to utilize TheWorxHub, we're seeing that it really is tailored toward hospitals. After using it, you can see how it really helps to keep you organized and on track to be compliant.

”

Jason Kohlbeck
Aspirus Wausau Hospital

Brightly by the numbers



2,000+
healthcare clients



70,000+
users completing
9M+ work orders

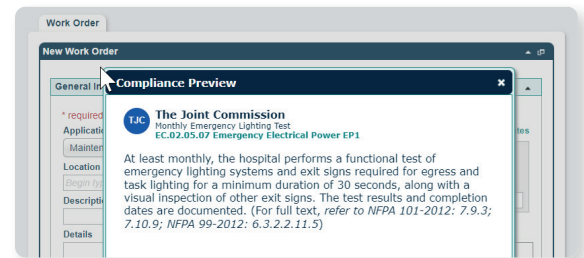


4.5 stars out of 5
for “ease of use”

Built for speed and simplicity, TheWorxHub integrates the latest compliance codes from The Joint Commission and DNV with key asset management tasks and rounding activities into one system, offering your frontline workers a modern, easy-to-use solution they’ll want to use.

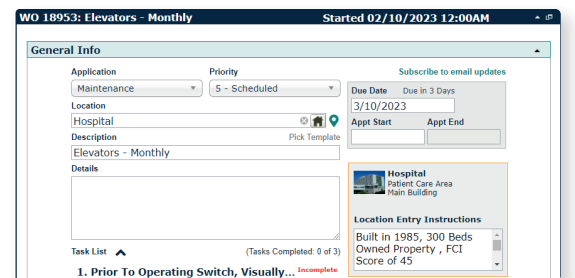
Streamlined, single point of access

By effortlessly combining two critical systems — asset management and compliance tracking— into one, digital solution, TheWorxHub eliminates the need and costs for outdated systems, while ensuring all legacy data is captured in one location.



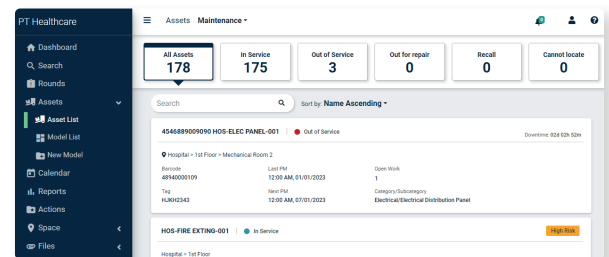
Built-in environment of care rounding

From updated compliance codes to pre-built templates for rounding inspections and corrective actions, TheWorxHub provides critical prompts and forms that generate inspection-ready documents, so nothing is missed in promoting health and safety.



Easy-to-use solution

By requiring just the right amount of asset information to generate a work order, TheWorxHub ensures relevant compliance standards are automatically applied to scheduled work orders covered by compliance — removing any unnecessary steps.



About Brightly Software

Brightly, a Siemens company, enables organizations to transform the performance of their assets. Brightly is the global leader in intelligent asset management solutions. Brightly’s sophisticated cloud-based platform leverages more than 20 years of data to deliver predictive insights that help users through the key phases of the entire asset lifecycle. More than 12,000 customers of every size worldwide depend on Brightly’s complete suite of intuitive software—including CMMS, EAM, Strategic Asset Management, IoT Remote Monitoring, Sustainability and Community Engagement. Paired with award-winning training, support and consulting services, Brightly helps light the way to a bright future with smarter assets and sustainable communities. For more information, visit www.brightlysoftware.com.



A Siemens Company