

Tools of the trade: 7 myths about K-12 facilities technology



Perhaps it is the many myths related to budget control, technology, time, money, and other environmental factors, but for facilities directors, superintendents, and other individuals responsible for managing facilities in K-12 schools, there seems to be no tool that can make your job any easier. Even if it feels like there should be an app for that.

Whether technology is perceived to be simply too complicated for the average user or too expensive an investment, getting past misconceptions is the first hurdle for schools to tackle.

Today, scalable, easy-to-use solutions exist to help schools tackle the multitude of facilities challenges they face. So, we're busting the seven myths about facilities technology to illuminate how the right tools and data ensure happier, safer, and healthier schools.

Myth 1

I have no control over my institution's facility budget

With budgets for a K-12 school typically controlled by a combination of the school district administration (superintendent, chief financial officer), the elected school board, and oversight from state and federal education departments, it's understandable why facilities directors feel they have no say over their facilities budget.

However, you can influence resource allocation through strategic planning, data-backed budget requests, and detailed explanations. Powerful asset management solutions like [Brightly Predictor™](#) and [Brightly Origin™](#) can gather asset data to provide insights that help forecast the impact of spending decisions or deferred maintenance and prove funding requests to support smarter planning and budgeting.



Brightly is best in class

Superintendents understand the importance of maintaining a safe, supportive learning environment and making strategic financial decisions that align with the long-term goals of the school district — and you can't do that if your school's facilities fall by the wayside.

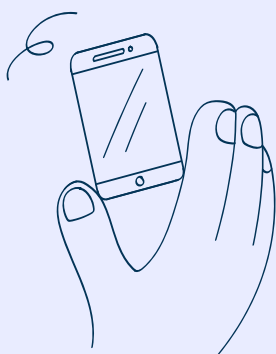
Leveraging your school's asset data can help ensure you make the most informed choices when allocating your funding. Brightly offers a full suite of operational learning management software that gives schools the power to act smarter and more efficiently to provide the learning environment that students need.



Myth 2

Implementing a new system is complicated and time-consuming

Yes, adopting new systems can take a bit of work at the outset, but the amount of work that will be saved once implemented is priceless. A partner like Brightly helps with planning and data migration strategies to ease this process, so you—and your teams—can be up and running in no time, trading your outdated software or manual paper processes for on-the-go accessibility wherever your day takes you.



Myth 3

Gaining buy-in from employees to use new technology is impossible

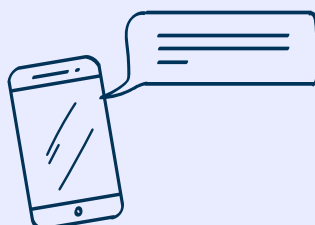
For many schools, employee engagement can be challenging at first — especially for your longtime facilities employees. But, with intuitive software from Brightly, a little bit of clear communication, training, and demonstrating ease-of-use and benefits is all it takes to help secure buy-in. (Not to mention, if you're looking to hire new employees as your older ones leave for retirement or other reasons, having the right tech in place is a huge draw for younger generations). Showcasing the value of the software as a user-friendly mobile app which simplifies workflows and encourages real-time response will help secure buy-in from your staff. It will make their lives easier!



Myth 4

All I need is an IT ticketing/work order management system

If all you think you need is something to capture and dole out work orders, you're missing the big picture! While such systems are important, a comprehensive approach to facilities management means you can consider preventative maintenance, strategic planning, asset management, and even sustainability to prioritize and strategically tackle those tickets — especially helpful if you have a limited number of team members on deck.



Myth 5

Customer support disappears after a vendor sells a system

Go with the wrong vendor, and you can get stuck with an expensive product that just doesn't quite work the way you need it to (and with zero help to troubleshoot). But choosing an engaged partner, like Brightly, who prioritizes your success and maintains open communication, means ongoing support that maximizes your value. We started out in the educational space over two decades ago and know what it takes to ensure you always have everything you need, complete with top-notch support at every step.



Myth 6

Sustainability trends do not impact facilities management

Sustainability is no longer a nice to have; it's necessary to have, especially as costs for utilities go up and up and more and more jurisdictions mandate certain sustainability metrics (hello, initiatives like [New York Local Law 97](#) and “[Leading the Charge](#)”). It is also crucial in both new construction and old facilities management as it can lead to cost savings and environmental impact. Software like [Brightly Energy Manager™](#) can help schools identify, track, and eliminate utility waste and report on sustainability efforts to your community and stakeholders — no small feat when you consider that school districts spend more annually on energy than on computers and textbooks combined.



Myth 7

Our school has events under control

Spoiler alert: yes, they do. Facilities management is an evolving field with changing technology, best practices, and trends — and technology can help facilities teams accomplish so much more with less, everything from preventive maintenance to justifying why they need budget increases to help keep the school safely open. Tools like [Brightly Asset Essentials™](#) help teams shift to better maintenance processes to avoid disruptions impacting the learning environment.

Brightly: Your first choice for K-12 learning management software

At Brightly, we believe with the right learning management software, maintenance and operations tasks become easier, budgeting and planning can be more accurate and impactful, and ultimately, money can be saved. Our team has built a suite of solutions that can work together to enable your school to solve some of your most pressing asset, infrastructure, and facilities challenges — and we've been helping institutions do it for decades.

Ready to break free of the myths? Visit our [website](#) to explore our suite of educational solutions

About Brightly Software

Brightly, a Siemens company, enables organizations to transform the performance of their assets. Brightly is the global leader in intelligent asset management solutions. Brightly's sophisticated cloud-based platform leverages more than 20 years of data to deliver predictive insights that help users through the key phases of the entire asset lifecycle. More than 12,000 customers of every size worldwide depend on Brightly's complete suite of intuitive software—including CMMS, EAM, Strategic Asset Management, IoT Remote Monitoring, Sustainability and Community Engagement. Paired with award-winning training, support and consulting services, Brightly helps light the way to a bright future with smarter assets and sustainable communities. For more information, visit [Brightlysoftware.com](#).



A Siemens Company